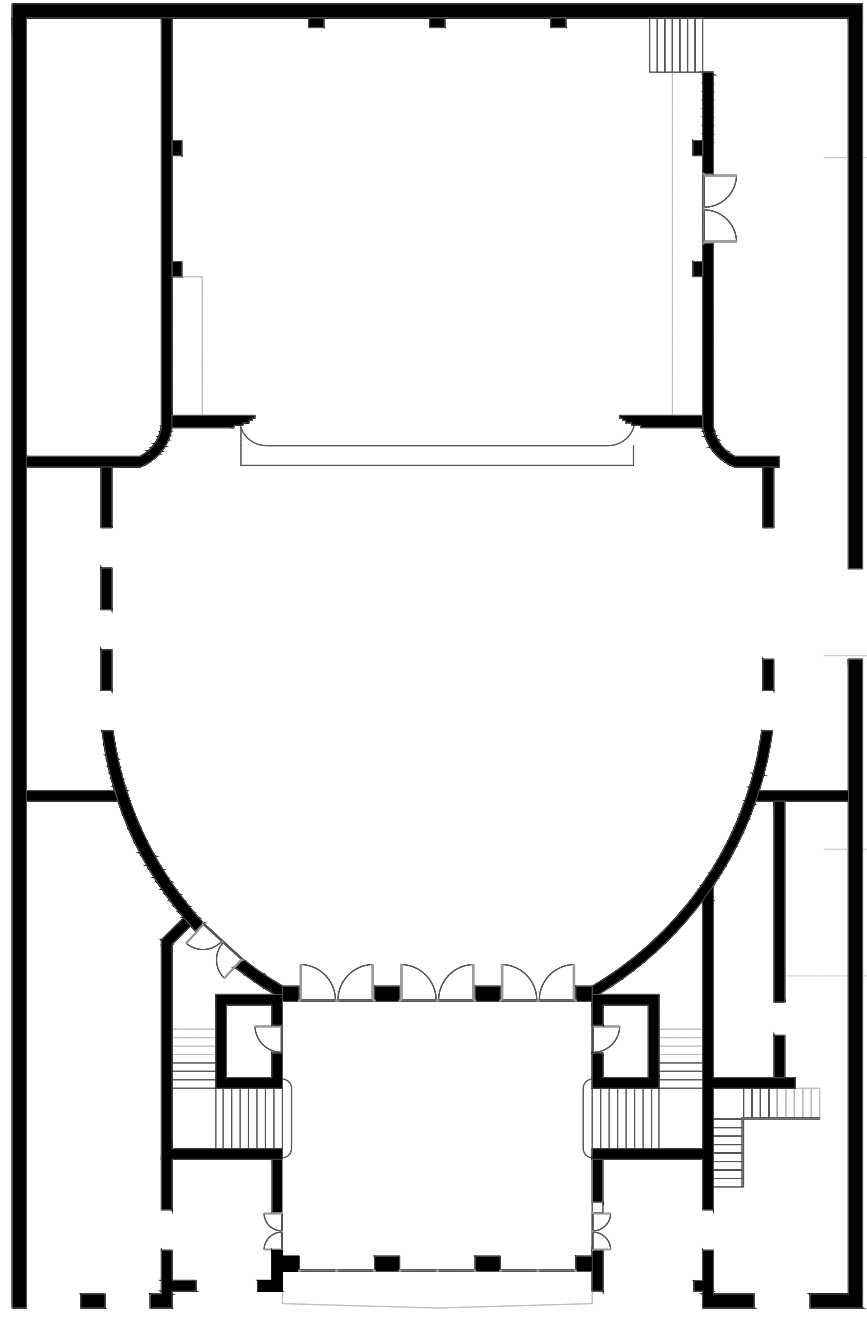


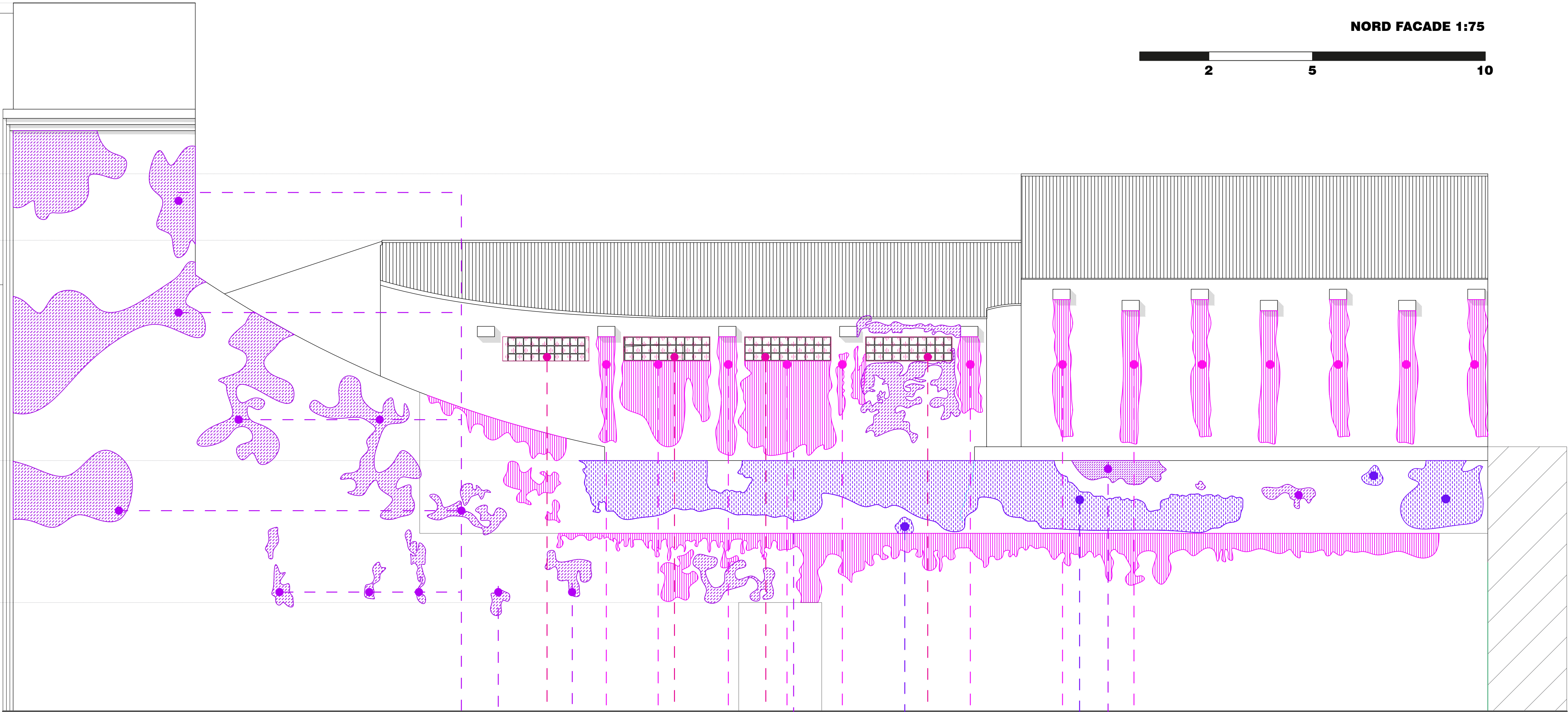
STATE OF CONSERVATION ANALYSIS

NORD FACADE

GROUND FLOOR 1:250



NORD FACADE 1:75



PHOTOGRAPHIC SURVEY

Casting



Casting



Ditachment



Ditachment



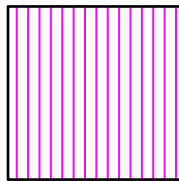
Lost



Exfoliation

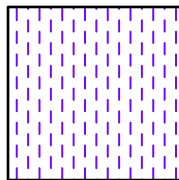


DECAYS



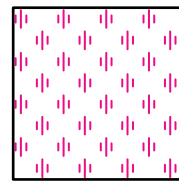
Casting

Series of vertical and parallel traces, typically due to the percolation of rainwater as a result of inefficient or missing gutters and downpipes



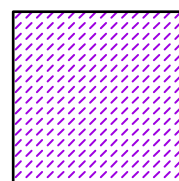
Ditachment

Disruption of continuity between surface layers of the material, either between them or in relation to the substrate: This usually precludes the fall of the layers themselves. The term is used in particular for plasters and mosaics. In the case of natural stone materials, the detached parts often take on specific forms depending on the structural and textural characteristics, and terms such as crust, spalling, exfoliation are preferred.



Lost

Loss of three-dimensional elements. In this case, the loss of the enclosure elements such as windows frames and glass, some are missing partially and some are missing completely.



Exfoliation

Detachment of multiple thin stone layers (cm scale) that are sub-parallel to the stone surface. The layers may bend, twist in a similar way as book pages. One of the main causes is the movement of water within the sub-layer, the action of micro-organisms or the application of pelliculating paint products on traditional substrates.

-ICOMOS-ISCs Illustrated glossary on stone deterioration patterns.
-77* UNI 11182, Cultural heritage, natural and artificial stone materials, Description of the form of alteration - Terms and definitions Italian standard 2006.

PROPOSED INTERVENTIONS

Casting

1. Total removal of chromatic layer with the aid of spatulas.
2. Dry cleaning of the bricks using sorghum brushes.
3. Grouting, repointing of joints and application of a layer of plaster and a layer of finish with plaster.
4. New downpipes installation

Ditachment

1. Total removal of chromatic layer with the aid of spatulas.
2. Dry cleaning of the bricks using sorghum brushes.
3. Grouting, repointing of joints and application of a layer of plaster and a layer of finish with plaster.

Lost

1. Removal of the still existing window frames and glass parts.
2. Replacement of the altered window frames with new ones following the original aspect.

Exfoliation

1. Total removal of chromatic layer with the aid of spatulas.
2. Dry cleaning of the wall using sorghum brushes.
3. Grouting, repointing of joints and application of a new chromatic layer according to original color.